

# NORDITUBE TECHNOLOGIES

TRENCHLESS PIPE REHABILITATION



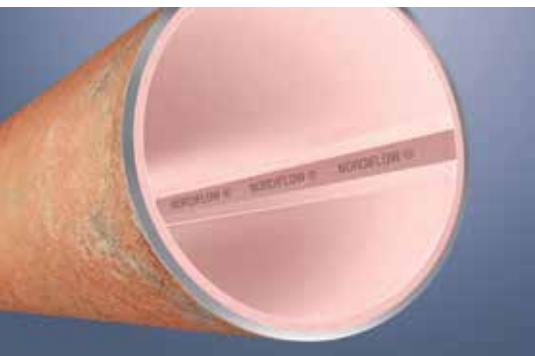
PROVIDING SOLUTIONS





# NORDITUBE TECHNOLOGIES - YOUR TECHNOLOGY PARTNER

NordiTube Technologies, established since 1987, is a leading technology provider for trenchless pipe rehabilitation and has been producing CIPP liners for more than 30 years. Backed up by a global trading company in Austria and a production site in Belgium, the experts of NordiTube Technologies offer a wide range of innovative systems, materials, equipment, expertise and technical support to customers around the world.



NORDIFLOW - for pressure pipes

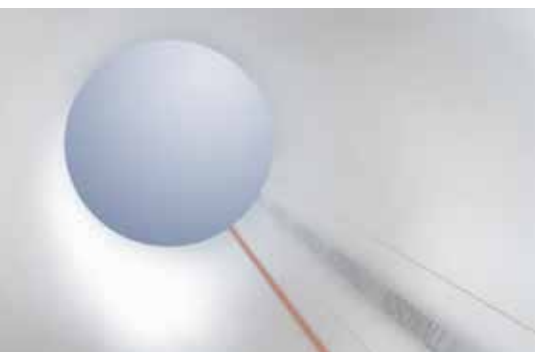
## TRENCHLESS PIPE REHABILITATION - OUR EXPERTISE

Underground piping systems are an integral part of urban infrastructure. As pipes age and urban populations grow, quick and safe rehabilitation methods with only minimal impact on the environment and the existing infrastructure are needed.

NordiTube Technologies's portfolio comprises optimised solutions for maintenance, rehabilitation and renewal of gravity and pressure pipes, such as:



TUBETEX - for pressure pipes



NORDIWALL - for gravity pipes



SEWAGE



GAS



PETROCHEMISTRY



WATER



INDUSTRY



HEATING

Our fully-structural and semi-structural solutions are available in dimensions ranging from DN 80 to 1800 mm.

## INDIVIDUAL SOLUTIONS FOR YOUR NEEDS

This creates a “one-stop shop” for innovative pipe rehabilitation solutions. Under the motto “all from one source”, NordiTube Technologies provides the entire range of pipe rehabilitation technologies, including materials, equipment, technical support and approved high-end liner systems as well as robots, CCTV inspection equipment and software.

### TECHNOLOGIES

- CIPP
- Close-Fit (Pre-deformed PE pipe)
- Spiral Wound Systems
- Rehabilitation of tanks and manholes
- Trenchless renewal

### PRODUCTS

We provide a wide array of pipe rehabilitation materials, including:

- Felt liner
- Glass reinforced liner
- Round woven textile liner
- Factory impregnated liner
- Resin
- Pre-deformed PE pipe (r.tec® Close Fit)
- Spiral Wound Systems

### EQUIPMENT

- Pipe cleaning equipment
- CCTV inspection equipment
- Rehabilitation robots
- Liner impregnation units
- Inversion units
- Curing units
- Accessories (e.g. telemetric system, special tools, etc...)

### SERVICE

- Choice of system
- Conceptual design and engineering
- Project assistance
- Approvals
- On-site supervision
- Development of customized solutions

### SYSTEMS

Depending on requirements, application areas and host pipe conditions, you may choose from the following pipelining technology systems:

	PRESSURE				GRAVITY	
	NORDIPIPE	NORDIFLOW	TUBETEX	r.tec® CLOSE FIT	NORDIWALL	UNILINER
Application area	Sewer, Water, Industry	Sewer, Water, Industry	Water, Gas, Industry	Sewer, Water, Gas, Industry	Sewer, Industry	Sewer, Industry
Special application	<ul style="list-style-type: none"> <li>• NORDIPIPE PE Pull-in system</li> <li>• NORDIPIPE PP Inversion system</li> </ul>	<ul style="list-style-type: none"> <li>• NORDIFLOW Inversion system</li> </ul>	<ul style="list-style-type: none"> <li>• TUBETEX COMBI LINER</li> <li>• Additional felt</li> </ul>	<ul style="list-style-type: none"> <li>• 100 % PE without gap</li> </ul>	<ul style="list-style-type: none"> <li>• NORDIWALL HT High temperature up to 120°C</li> <li>• NORDIWALL FLEX very flexible felt</li> <li>• NORDIWALL SUPER FLEX Lateral (DN 50mm+)</li> </ul>	<ul style="list-style-type: none"> <li>• Big dimensions</li> <li>• High wall thickness</li> </ul>
Diameter*	150–1400 mm	150–1200 mm	80–1200 mm	150–400 mm	150–1200 mm	150–1800 mm
Material	Glass fibre reinforced felt	Glass fibre reinforced felt	Round woven polyester yarn	PE 100 PE 100 RC	Polyester needled felt	Polyester needled felt
Coating	PE or PP-PE copolymer	PE	PE, TPU or Hytrel™	/	PE or PP	PE or PP
Resin	r.tec 582-25 OF NORDIPOX D	r.tec 582-25 OF NORDIPOX D	r.tec 512-22 NORDIPOX TX	/	r.tec 521-26 UP	r.tec 521-26 UP

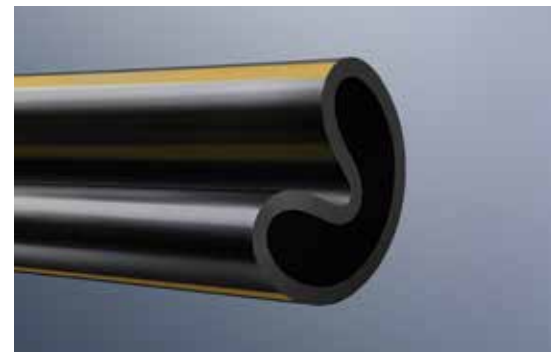
\* Special diameter on demand

### NORDITUBE TECHNOLOGIES AT A GLANCE:

- Trenchless pipe technologies for pressure and gravity pipes ranging from DN 80–1800 mm
- Equipment for cleaning, inspection and pipe rehabilitation
- Technical support



CIPP installation unit



r.tec Close-Fit – for pressure and gravity pipes



**Norditube Technologies SE**

Bruckbachweg 23  
4203 Altenberg  
Austria

+43 (0) 7230 86 87 0

**[sales@norditube.com](mailto:sales@norditube.com)**  
**[www.norditube.com](http://www.norditube.com)**



NORDITUBE  
TECHNOLOGIES

---

**PROVIDING SOLUTIONS**